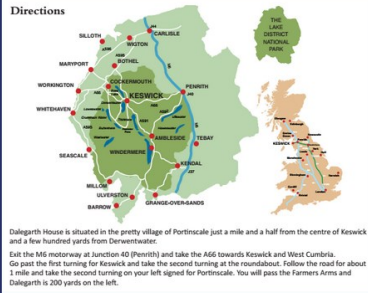


Craig & Clare Dalton
Dalegarth House

Portinscale, Keswick, Cumbria CA12 5RQ
Tel: 017687 778337
Email: sales@dalegarth.co.uk
www.dalegarth-house.co.uk



Dalegarth House
Award winning guest house



Welcome

Dalegarth House is a beautiful Edwardian house in the peaceful village of Portinscale, just a twenty minute walk from Keswick.

Situated in an elevated position, the property commands superb views of Derwentwater and the surrounding Lakeland fells. We offer a selection of stylishly furnished, comfortable ensuite rooms including double, super king size, twin, single and a family room. Most rooms enjoy a lake or fell view.

Everywhere you look is a photograph - looking down Borrowdale, the crags and fells surrounding the lake, forest walks through ancient woodland. Gentle walks or challenging hikes are available from the doorstep or by using the buses from the bus stop just over the road.

There is ample private car parking for all guests vehicles and secure bicycle storage available.

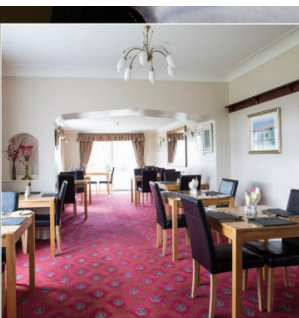
Portinscale has two marinas where canoes, kayaks and other craft can be hired or moored. The Derwentwater Launch can also be boarded in Portinscale for a cruise around the lake, a hop into Keswick or to the foot of Catbells.



Accommodation

All our rooms are ensuite, combining modern tastes and the deep comfort of tradition. We have ten bedrooms, each with flat screen TV, central heating, tea and coffee making facilities, hairdryer and free WiFi.

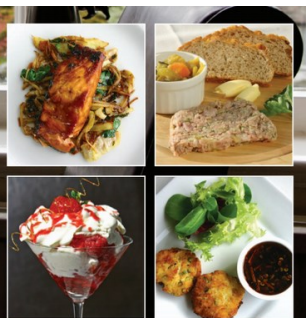
Guests have the use of the lounge where pre and post dinner drinks can be served whilst enjoying the view over the lake and to Walla Crag. To maintain the quiet atmosphere of the house, there is no late bar service, although we are only a stones throw away from The Farmers Arms pub.



Food

Breakfast features a selection of cereals, fresh fruit and yoghurts alongside the traditional English breakfast, using the best locally sourced ingredients.

A three course evening meal is available to all guests. Clare, the chef/proprietor offers a daily changing menu with choices on each course. We endeavour to offer something for everyone on the menu from traditional English to modern international dishes. Just make sure you leave enough room for one of the sumptuous desserts.



Dalegarth House
— GUESTHOUSE WITH RESTAURANT —
Portinscale near Keswick

